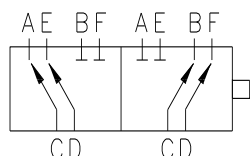
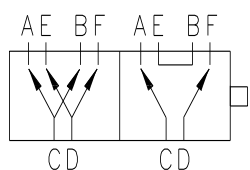


## MDS- Double Selector Hydraulic Valve 6 Way

### Functional Symbol:



**Standard**



**Series Parallel**



### Description:

The MDS is a two position, double selector valve which directs the flow of hydraulic fluid to two separate hydraulic circuits. This allows operation of two double acting cylinders with one four-way control valve or four-single acting cylinders with two-three-way control valves.

### Operation:

The Metro MDS two position double selector valve is of the open-crossover type. When the spool is moved and one pair of outlet ports start to close, the other pair of outlet ports start to open.

### Installation Examples:

[Hydraulic Circuit- Selector Valve w Optional Float Spool](#)

[Hydraulic Circuit- Double Selector w Power Beyond Directional](#)

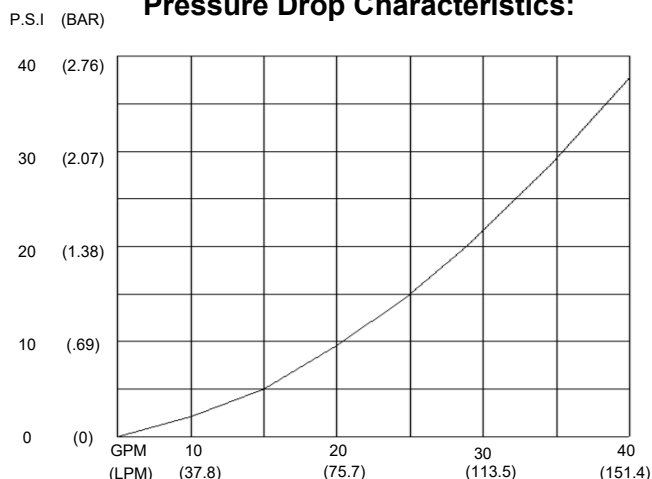
### Features:

- Easy to Mount
- Chrome Plated Spool, for long lasting
- High-Tensile Cast Iron Body
- Knob/ handle options

### Specification:

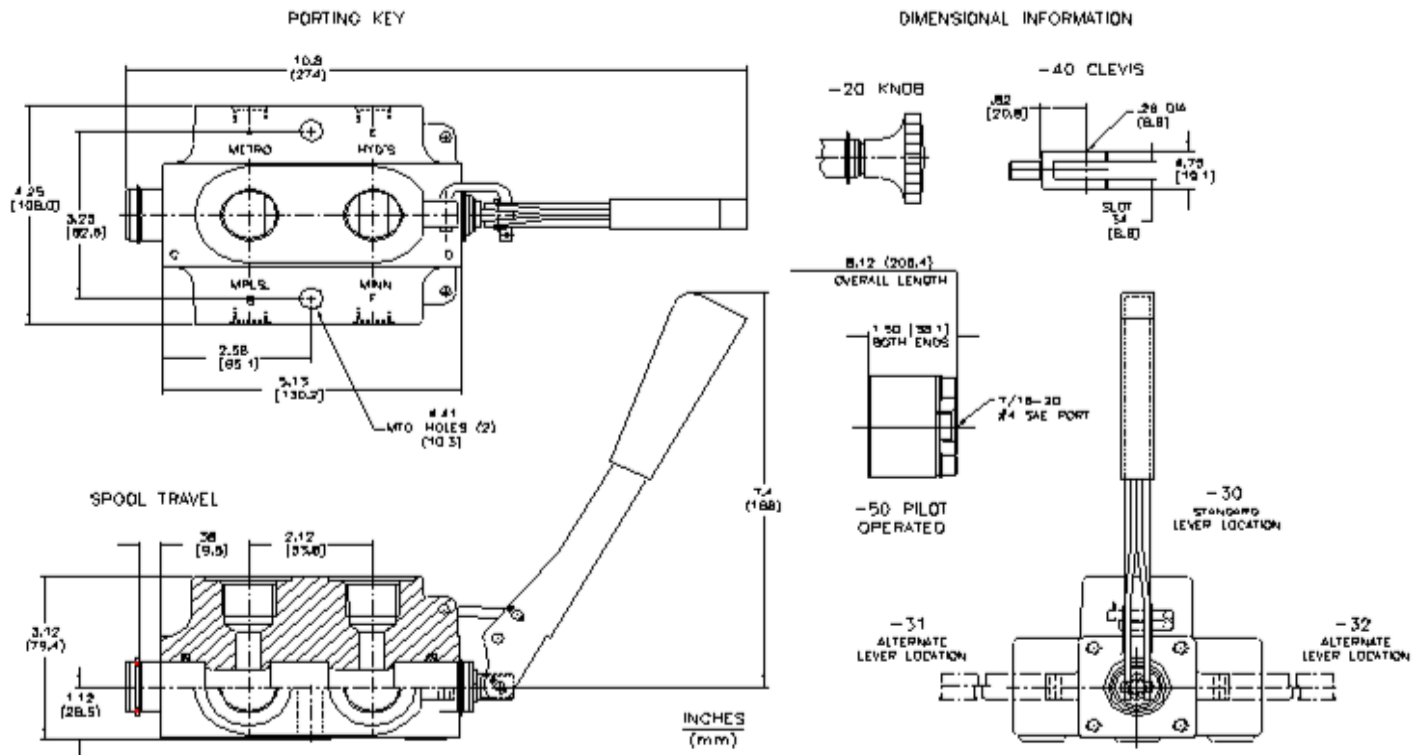
Flow	Pressure	Temperature	
30 GPM	3000 PSI	-22° to + 194° F	10 lbs
114 (L/MIN)	(207 Bar)	-30° to + 90° C	(4.5 kg)

### Pressure Drop Characteristics:



## MDS- Double Selector Hydraulic Valve 6 Way

### Technical:



### Ordering Instructions:

<div style="display: flex; justify-content: space-around; align-items: center;"> <span style="background-color: #f4a460; padding: 2px 5px;">MDS</span> <span style="background-color: #f4a460; padding: 2px 5px;">08</span> <span style="background-color: #f4a460; padding: 2px 5px;">P</span> <span style="background-color: #4dc0f5; padding: 2px 5px;">50</span> <span style="background-color: #f4a460; padding: 2px 5px;">SR</span> <span style="background-color: #4dc0f5; padding: 2px 5px;">ZP</span> </div>					
Model Number	Port Size	Spool Type Options	Spool Actuator	Spool Return Options	Finish Options
<b>MDS</b>	<b>04</b> 1/2" - 14 NPT	<b>Blank</b> <b>P</b> Std Crossover Parallel	<b>Blank</b> Black Plastic Knob	<b>Blank</b> None	<b>Blank</b> - Plain Casting <b>ZP</b> - Zinc Plated
	<b>05</b> 3/4"-14 NPT		<b>10</b> No Actuator	<b>60</b> High Pressure Hyd Return	
	<b>06</b> 1" NPT		<b>25</b> Alum Handle	<b>SR</b> Spring Return (100psi)	
	<b>08</b> #8 SAE, 3/4" - 16		<b>30</b> Handle Kit/ standard	<b>SRHD</b> Spring Return HD (200psi)	
	<b>10</b> #10 SAE, 7/8"-14		<b>37</b> Handle w bar link 10.5"	<b>SRHU</b> Spring Return Heavy Usage	
	<b>12</b> #12 SAE, 1 1/16"-12		<b>37R</b> Handle w bar link 10.5", Reverse	<b>RD</b> Spring Return w \std spool	
	<b>16</b> #16 SAE, 1 5/16"-12		<b>40</b> Clevis	<b>SRS</b> Spring Return SST	
			<b>50</b> Hydraulic Pilot	<b>PL</b> Position Locking	
			<b>50S</b> Hydraulic Pilot, SST		
			<b>55</b> Eye Bolt Actuator		
			<b>55EB</b> Elevator Bolt Actuator		
			<b>60</b> High Pressure Hyd Pilot		
			<b>60A</b> Hyd Pilot/Solenoid Actuator		
			<b>60S</b> High Pressure SST Hyd Pilot		
			<b>85</b> Air Pilot		